

# PRODUCT DATA SHEET



## ELEVATE KNIT GREEN LOW S1P ESD HRO SRC

Art. No. 64.317.0



- Protection:** fiberglass toe cap and flexible FAP® midsole  
**Plus:** TPU protection in the heel and toe area, metal free, ESD  
**Upper:** SAFETY KNIT®  
**Lining:** BreathActive functional lining  
**Footbed:** evercushion® CUSTOM FIT MID  
**Sole:** rubber sole URBAN with IdCELL and Rotation Point System, 300°C heat resistant  
**Colour:** blue-green  
**Sizes:** 39 - 47



### RUBBER OUTSOLE URBAN

This 300° C heat resistant HRO rubber outsole with its differently shaped profile elements offers optimal mobility and safe contact with the ground. Due to the increase of the rotation point, friction and thus tiredness can be significantly reduced.

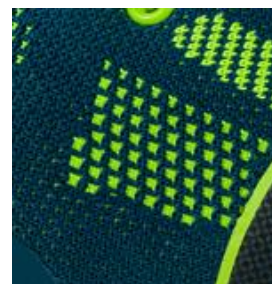


### idCELL

The idCELL element in the heel area consists of a very soft sponge EVA midsole and perfectly absorbs impacts and shocks when the heel strikes the ground.

### evercushion® CUSTOM FIT MID

The anatomically shaped evercushion® CUSTOM FIT MID footbed provides optimal cushioning with every step. The specially coordinated arch support enables the natural positioning of the foot in the shoe and stimulates the muscles when walking. Also available in the retail pack in the Versions LOW and HIGH, for narrow ones or wide feet.



### SAFETY KNIT®

STEP IN COMFORT - The ultraflexible textile fabric perfectly adapts to the foot and fits like a sock. The upper SAFETY KNIT®, a mixture of high quality synthetic fibres, offers a high flexibility, resistance and breathability at the same time.